

Boating Rules

Revised

August 6, 2023

HOLISHOR ASSOCIATION, INC. BOATING RULES AND REGULATIONS

All rules posted in this section adhere to the Illinois Boat Registrations and Safety Act regulations and any subsequent amendments. (625 IL 45 All Sections) All watercraft operators must adhere to these regulations when operating watercraft on Holishor Association lakes.

Illinois Department of Natural Resources (IDNR) officers and all other officers enforce boating laws. (625 IL 45/2, 5-22) www.idnr.illinois.gov

For Federal boating laws please visit www.uscgboating.org

Holishor Association includes rules specific to our lake that are included below and enforced by designated lake patrol officers.

Guests

The Holishor member is responsible for the actions of any person within/on the member's watercraft at all times. Any guest operating a watercraft on Holiday Lake must be informed of and acknowledge their understanding of the Boating Rules and Regulations prior to operation of any watercraft. No guest may operate a motorized watercraft on Holiday Lake unless they are accompanied by a member. Guests must comply with current Illinois Boating Safety class requirements and have a valid Boating Safety Certificate as required by the IDNR in their possession while operating any watercraft. The certificates are based on the age of the operator.

Traffic Pattern

All watercraft operated on Holiday Lake shall travel in a counterclockwise direction.

Legal Compliance

All watercraft operated on Holishor Association lakes must adhere to and comply with state and federal laws as stated in the *Illinois Boat Registrations and Safety Act*. (625 IL 45) (5/8/13)

Watercraft Registration

To receive the required Holishor Assn. Inc. decals to allow use of watercraft on Holiday and Su Twan Lakes, the following criteria must be satisfied at the time of registration.

- only members in good standing may register
- Members must provide a current Department of Natural Resources registration card showing hp, length, and cc's; if such information is not listed on the card, the office shall obtain this information from other sources.
- Proof of required \$300,000 liability insurance.
- Dated and signed signature page on file stating member has read and understands Boating Rules.

Decals will not be issued until all required documents are provided.

All watercraft to be used on Holiday and Su Twan Lakes must be registered in accordance with state and federal regulations and be equipped as prescribed by state conservation laws governing Illinois.

All watercraft to be used on Holiday and Su Twan Lakes must be registered with the Holishor Association and display a valid Holishor Association decal. Holishor Association decals shall be affixed to both the starboard (right) side and port (left) of the craft near the stern for all watercraft except PWC's. PWC's numbers/decals shall be placed above the rub rail near the bow to aid in visibility when the watercraft is at rest or underway. Lot numbers shall be at least three (3) inches in height and a contrasting color to the craft. (See figure 1 – Decal Placement). No watercraft will be registered if required information is not available at the time of registration (type of watercraft, length, hp, etc).

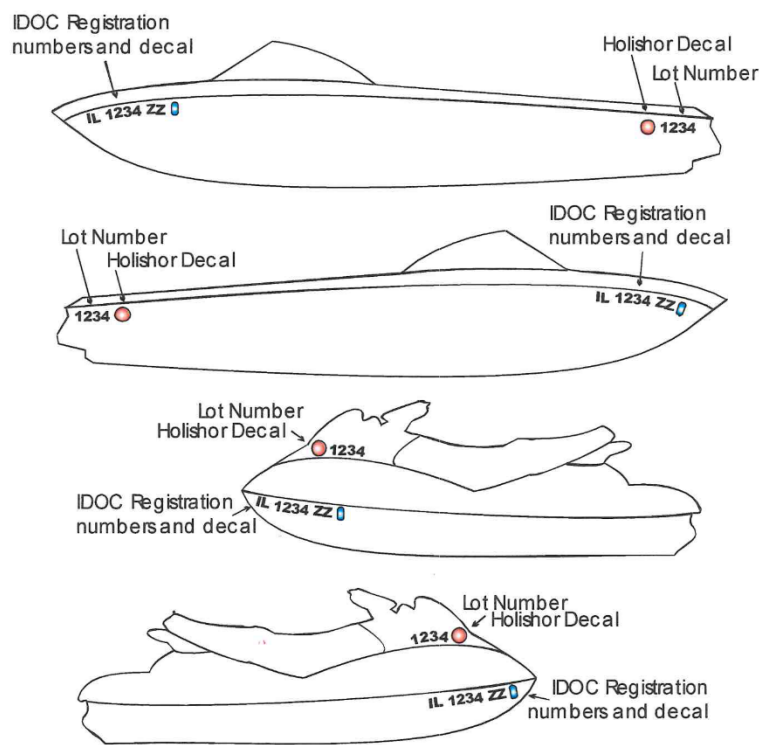


Figure 1: Decal Placement

No watercraft is permitted on Holiday Lake and Su Twan Lake without the required lot number and Holishor Association decals. (5-15-99)

Insurance

All motorized watercraft operated on Holiday Lake shall have in full force and affect a policy of liability insurance on such watercraft with minimum limits of \$300,000. No marine decal shall be issued by Holishor Association, Inc. for any motorized watercraft until proof of said insurance for that watercraft is provided (*Bylaw, Article III, Section 1D, 5/20/89*)

Operating Age

Persons born on or after January 1, 1998 may operate a vessel powered by a motor greater than 10 horsepower (hp) only if they have a valid Boating Safety Certificate accepted by IDNR. The age of operator, Boating Safety Class requirements, carrying capacities and horsepower shall be as prescribed by state and federal laws governing boating. (*See the current Illinois Boat Registration and Safety Act*) (625 IL 45). Operators of any watercraft must follow the age requirements as noted in the Illinois Boating Requirement and Safety Act.

Holiday Shores Watercraft Test

Individuals ages sixteen and under are required to take the Holiday Shores Watercraft Test before operating a motorized watercraft on Holiday and Su Twan Lake. The test format will be open, meaning it can be printed online or given from the Holishor Office and then graded by the Holishor Office. The test will only be required once unless a moving violation has occurred. If a moving violation has occurred, the violator and the member will be required to retake the test prior to operating a motorized watercraft. (*Board of Directors Meeting 10/9/19*)

Watercraft Limit

No more than three (3) motor powered watercraft per membership shall be in operation at one time on Holiday Lake. "In operation on the water" shall be defined as any watercraft occupied and in operation on the lake. Watercrafts on lifts or on land will not be considered in use. A member in good standing with the association may request a waiver from the Holishor Board of Directors. (BYLAW XI, Section 2, Boating Rule #7). For the purpose of the lake patrol, the definition of "operating" will be: "not tied at a dock – a non-docked watercraft." (*Ref. Board of Directors Meeting 9/22/93*)

Prohibited Watercraft

The following watercraft shall not be allowed on Holiday and Su Twan Lakes:

- Watercraft with open unrestricted exhaust or without a muffler system is prohibited. The use of optional unrestricted exhaust on watercraft so equipped is prohibited. (*Boats as listed above registered with the Association prior to 3/26/97 are grandfathered.*)
- Drag boats or racing boats.
- Boats with head facilities on board which are not self-contained systems.
- 2 stroke PWC's greater than 85HP.
- PWC's greater than 150HP.
- PWC's need to be 4 strokes. 2 stroke PWCs currently registered with Holiday Shores will be grandfathered in. When ownership changes that 2 stroke PWC will no longer be permitted.
- Personal Hovercrafts. (Ref Board of Directors Meeting 3/8/95)

- Any watercraft except tubular bottom pontoon boats with a Length Overall greater than 22 feet (ref. size limits section).
- Any tubular bottom pontoon boats with a Length Overall greater than 28 feet Length (ref. size limits section). (*Board of Directors Meeting 8/28/19*)

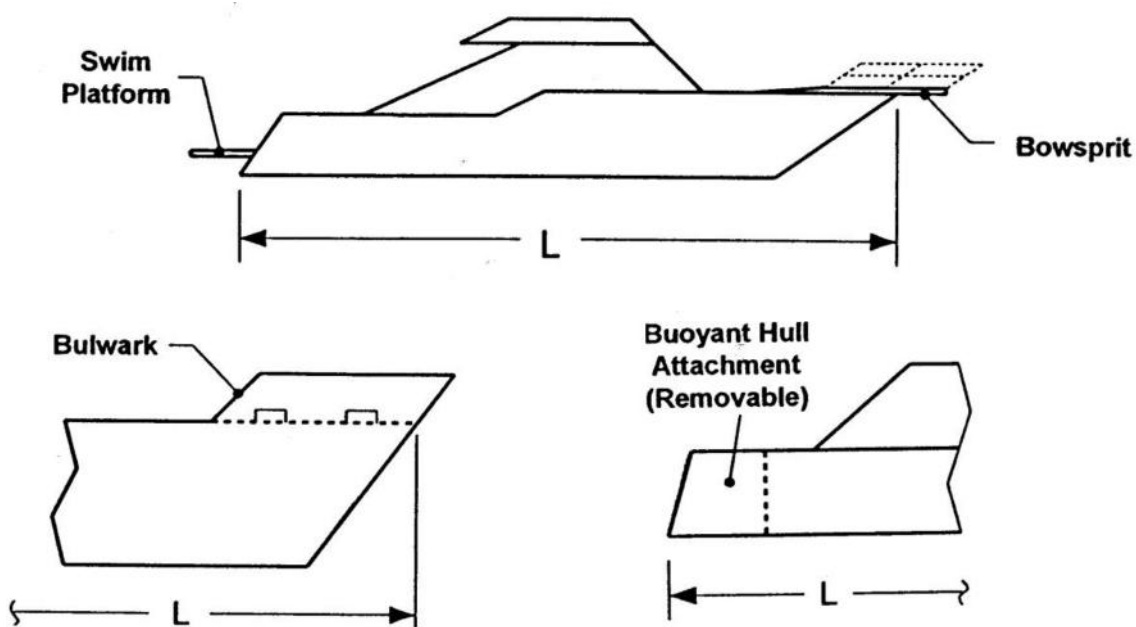
Size Limit

Pontoon boats, (tubular bottom) operated on Holiday Lake shall not exceed twenty-eight (28) feet in Length Overall (LOA). All other watercraft shall not exceed twenty-two (22) feet in length. (*All watercraft registered with the Holishor Association prior to 1-1-89, shall be considered exempt from this rule.*)

Length Overall Defined

USCG Enclosure (4) to MTN 01-99 CH5, Tonnage Technical Policy, Simplified Measurement 69.203 Definitions, Page 4:

OVERALL LENGTH means the horizontal distance between the outboard side of the foremost part of the stem and the outboard side of the aftermost part of the stern, excluding rudders, outboard motor brackets, and other similar fittings and attachments. Also excluded from length are non-buoyant attachments such as bulwarks, bowsprits, overhanging decks, swim platforms and stern-wheel supports. Buoyant hull structures both fixed and removable are included in the overall length, and consequently in tonnage.



Boating Hours

Boating shall be allowed on Holiday and Su Twan Lakes twenty-four (24) hours a day. Between sunset and sunrise watercraft shall operate at “No Wake” speeds only.

Noise Level limit

No person may operate a watercraft on the waters of this State in a manner to exceed a noise level of 75 decibels measured as specified in the Society of Automotive Engineers in its procedure J1970 from any point on the shoreline, or from any point on the water within 20 feet of the shoreline, of the body of water on which the watercraft is being operated. (625 ILC 45/4-3B) (3-26-97). Noise level includes but is not limited to engine, motors, stereo or music equipment, etc.

Restricted Areas

No person shall operate any watercraft in a restricted area which has been designated a “No Wake” area, swimming area, or an otherwise restricted area except in the prescribed manner.

(See Figure 2 – Restricted Areas).

- Marina Cove- No Wake Area
- Fishing Arm – No Wake Area
- Clubhouse Beach – Swimming Area
- North End – No Wake Area – Shallow Area
- Admiral Bay – No Wake Area
- Wanda Cove – No Wake Area
- Tamarach Beach – No Wake Area – Swimming Area
- Cedar Cove – No Wake – Swimming Area
- Tunnel Cove – No Wake Area
- Jib Cove – No Wake Area
- South Anchor Cove – No Wake Area
- A distance of seventy-five (75) feet from the shoreline shall be considered a “No Wake” area unless otherwise posted with buoys.
- No Wake Water Levels for entire lake:
 - When the lake level reaches 9” over full pool the lake shall be made “no wake”. There are identifying lake level markers at various locations on the lake which identify these levels. The “no wake” light atop the clubhouse shall also be used to indicate a “no wake” status. (Ref: Board of Directors Meeting 7/28/93)
 - When the lake level reaches 16” below full the lake shall be made “no wake”. There are identifying lake level markers at various locations on the lake which identify these levels. The “no wake” light atop the clubhouse shall also be used to indicate a “no wake” status. (Ref: Board of Directors Meeting 12/13/00)

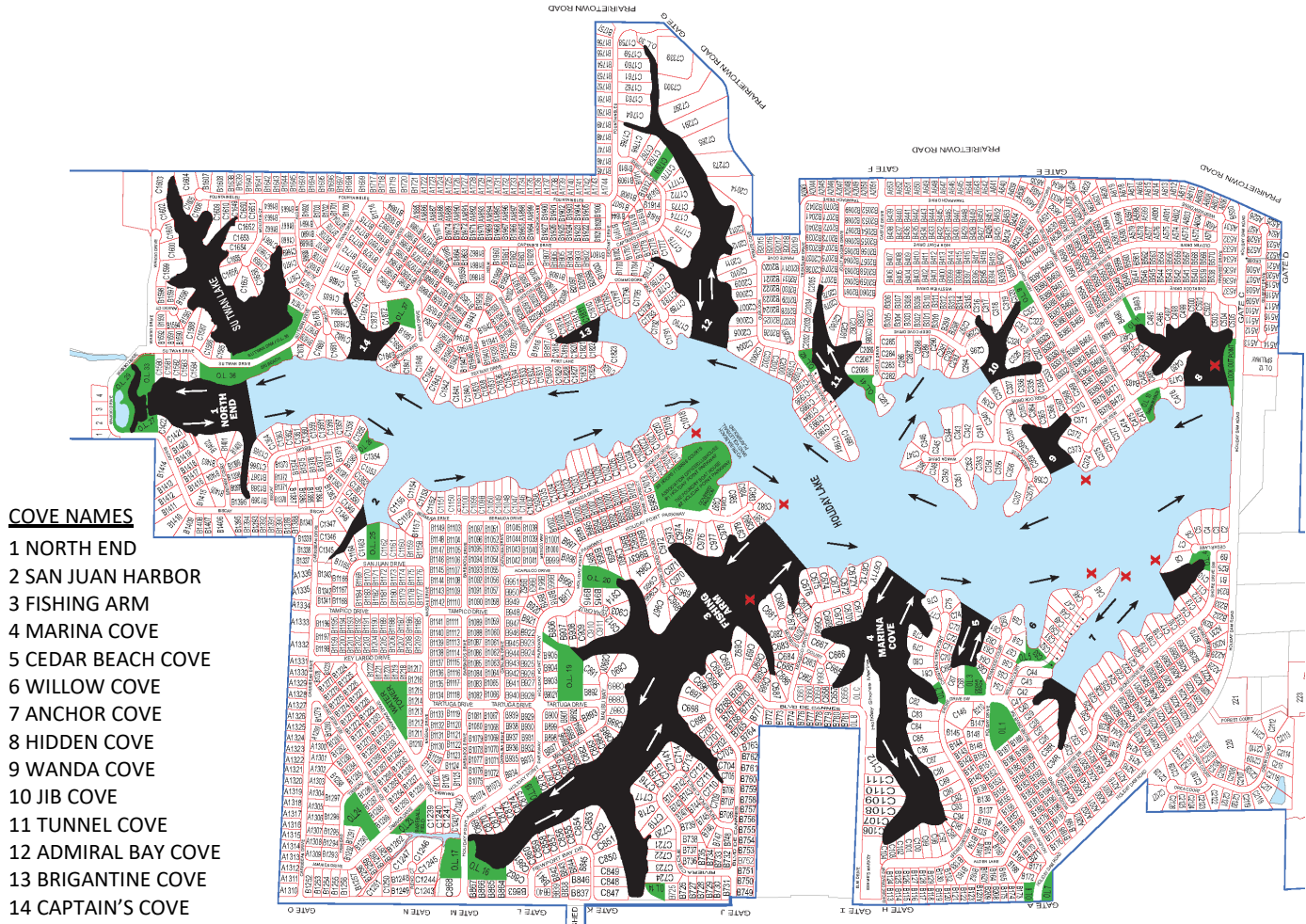


Fig. 2 Black Areas – No Wake

A wake is defined as the movement of water created by a boat underway great enough to disturb a boat at rest, but under no circumstances shall a boat underway exceed five (5) miles per hour while in a NO WAKE area. (625 ILCS 45/5-12)

Restricted Operation of Watercraft

- **Muscular, Canvas/Sail:** The use of muscular powered watercraft, canvas or sail powered watercraft less than sixteen (16) feet in length, and all non-mechanical powered watercraft shall be restricted to the following areas between 12p.m. (noon) (1200 hours) and 6:00p.m. (1800 hours) on Saturday, Sunday and all holidays between, and including, Memorial Day and Labor Day:
 - All coves on Holiday Lake other than designated swimming areas.
 - A distance not to exceed seventy-five (75) feet from all shorelines unless otherwise posted with a buoy.

- Muscular powered watercraft, canvas or sail powered watercraft less than sixteen (16) feet in length, and all non-mechanical powered watercraft may cross the main lake, if the sole purpose of crossing the main lake is to reach a designated “No Wake” area and crossing the main lake can be accomplished in a safe manner. (5-16-92)
- **Aqua Scooters:** Aqua scooters shall be restricted to No Wake coves.
 - Operators 12 years of age and under require adult supervision.
 - The use of aqua scooters shall be prohibited between sunset and sunrise.
 - The operator shall be required to wear a US Coast Guard approved personal floating device.
 - Aqua Scooters shall be limited to 2HP and 48cc’s.
 - Aqua Scooters shall have an orange bicycle flag attached not less than 3 feet in height.

Prohibited Activities

- All wake surfing, teak surfing or similar surfing is prohibited. (12-11-13) Refer to the Speed Limit section, “Plowing”

Personal Watercraft (PWC’s)

- May not operate between sunset and sunrise.
- All persons on a PWC must wear a Coast Guard approved personal flotation device (PFD)
- When a PWC is used as a tow vehicle, the requirements are as follows:
 - An observer is required.
 - There must be space for an observer to sit, and space for the person being towed to ride should he need to be picked up (3 seater).
 - The spotter must be in a sitting position to be able to continuously observe the person being towed.
 - While towing an orange flag must be displayed on the PWC.

Swimming Restrictions

Unless accompanied by a watercraft, swimmers and persons using floating devices shall be limited to:

- Restricted Areas (See Figure 2- Restricted Areas)
- A distance not to exceed seventy-five feet from all shorelines unless otherwise posted with a buoy.

Reckless or Careless Operation

No watercraft shall be operated in a careless manner. Definition of Careless Operation – (625 ILCS 45/5-1) – No person shall operate any watercraft in a careless or heedless manner so as to endanger any person or property or at a rate of speed greater than will permit him in the exercise of reasonable care to bring the watercraft to a stop within the assured clear distance ahead. (3-26-97)

No watercraft shall be operated in a reckless manner. Definition of Reckless Operation – (625 ILCS 45/5-2) - No person shall operate any watercraft, specialty prop-craft, personal watercraft or manipulate any water skis, aquaplane, or similar device in such a manner as to

willfully or wantonly endanger the life, limb, or property of any person, to weave through congested traffic, to jump the wake of another vessel or when visibility around the other vessel is obstructed, to wait until the last possible moment to swerve to avoid collision, or operate any watercraft so as to approach or pass another watercraft in such a manner or at such a rate of speed as to create a hazardous wake or wash. (3-26-97)

Water Skiing

(625 ILCS 45/5-14) – No person may operate a watercraft which has in tow or is otherwise assisting a person on water skis, aquaplane or other similar contrivance, in or upon any waterway, unless such watercraft is occupied by at least two (2) competent persons.

Competent- (625 ILCS 45/1-2) - Capable of assisting a skier in case of injury or accident. (3-26-97)

Orange Flag

The operator of any watercraft that is towing a person or persons shall display on the watercraft a bright or brilliant orange flag measuring not less than 12 inches per side. The flag shall be displayed at the highest point of the area surrounding the boat's helm as to be visible from all directions, continuously, while the person or persons being towed depart the boat in preparation for towing and until reentry into the boat when the activity has been ceased. Display of the flag for purposes other than the activity is prohibited.

Distance

Watercraft operators shall maintain a safe and reasonable distance from swimmers, downed skiers, fisherman, docks, and dangerous areas at all times.

Right of Way

Failure to yield right-of-way on water, prioritized as follows in descending order:

1. Swimmers
2. Downed Skiers
3. Non-powered watercraft
4. Powered watercraft

Racing

Racing of watercraft on Holiday or SuTwan Lakes shall not be permitted.

Jumping Wakes

Jumping boat wakes is considered dangerous and is highly discouraged. The following conditions apply to any wake jumping:

- Jumping the wakes of any watercraft towing is prohibited.
- You must remain a minimum of 100 feet behind any boat making the wake and be clear of all other watercraft.
- Wake jumping into the opposing traffic pattern is prohibited.

Failure to follow the above will be considered Careless and Reckless operation of the watercraft.

Power Turns

Power turns (180o or 360o short radius turns under power) are allowed, unless the following occur (3/26/97) :

- So as to be unreasonably close to another vessel to cause it to stop, swerve unnecessarily or take evasive action.
- So as to cause the occupants/riders to be thrown from the watercraft

No power turns will be allowed in any cove or be done in such a manner as to be a nuisance.

Personal Flotation Devices from 625 ILCS 45/4 1

No person may operate a watercraft unless at least one U.S. Coast Guard approved PFD of the following types or their equivalent is on board for each person: Type I, Type II or Type III.

No person may operate a personal watercraft or specialty prop craft unless each person aboard is wearing a Type I, Type II, Type III or Type V PFD approved by the United States Coast Guard.

No person may operate a watercraft 16 feet or more in length, except a canoe or kayak, unless at least one Type IV U.S. Coast Guard approved PFD or its equivalent is on board in addition to the PFD's required in paragraph A of this Section.

A U.S. Coast Guard approved Type V personal flotation device may be carried in lieu of the Type I, II, III or IV personal flotation device required in this Section, if the Type V personal flotation device is approved for the activity in which it is being used.

When assisting a person on water skis, aquaplane or similar device, there must be one U.S. Coast Guard approved PFD on board the watercraft for each person being assisted or towed or worn by the person being assisted or towed.

No person may operate a watercraft unless each device required by this Section is:

Readily accessible; in serviceable condition; of the appropriate size for the person for whom it is intended; and legibly marked with the U.S. Coast Guard approval number.

Approved personal flotation devices are defined as follows:

- Type I A Type I personal flotation device is an approved device designed to turn an unconscious person in the water from a face downward position to a vertical or slightly backward position and to have more than 20 pounds of buoyancy.
- Type II A Type II personal flotation device is an approved device designed to turn an unconscious person in the water from a face downward position to a vertical or slightly backward position and to have at least 15 1/2 pounds of buoyancy.
- Type III A Type III personal flotation device is an approved device designed to keep a conscious person in a vertical or slightly backward position and to have at least 15 1/2 pounds of buoyancy.
- Type IV A Type IV personal flotation device is an approved device designed to be thrown to a person in the water and not worn. It is designed to have at least 16 1/2 pounds of buoyancy.

- Type V A Type V personal flotation device is an approved device for restricted use and is acceptable only when used in the activity for which it is approved.

No person may operate a watercraft under 26 feet in length unless a Type I, Type II, Type III, or Type V personal flotation device is being properly worn by each person under the age of 13 on board the watercraft at all times in which the watercraft is underway; however, this requirement shall not apply to persons who are below decks or in totally enclosed cabin spaces. The provisions of this subsection I shall not apply to a person operating a watercraft on private property.

Further, No person may operate a watercraft on Holiday or Su Twan lakes unless a Type I, Type II, Type III, or Type V personal flotation device is being properly worn by each person under the age of 13 on board the watercraft at all times in which the watercraft is underway.

Speed Limit

The maximum speed limit of any watercraft on Holiday Lake shall be 55mph or as defined in the Reckless or Careless Operation section of the Holiday Shores Boating Rules. Operation of said watercraft shall be in a manner that does not create an exaggerated wake. Intentionally “Plowing” or “pushing water” at speeds greater than no-wake, but less than those typically maintained while “on plane”, is not permitted.
(5/8/13)

Behavior Towards Holishor Staff

Obnoxious or threatening behavior to Holishor Staff shall not be tolerated.